

**NAGALAND INDUSTRIAL DEVELOPMENT
CORPORATION LIMITED**

A Government of Nagaland Undertaking



**ANNUAL ADMINISTRATIVE REPORT
1st April 2024 – 31st March 2025**

**IDC house, Opposite Super Market,
Dimapur -797112, Nagaland (India)
Email : nidcnagaind@gmail.com
Website : www.nidc.nagaland.gov.in
Telephone No. 03862 – 228209/230632
CIN : U75112NL1970SGC001312**

Contents

1. Background & Ownership of the Corporation
2. Management structure of the Corporation
3. Activities of the Corporation
4. New Initiatives
5. Projects in the Pipeline
6. Conclusion

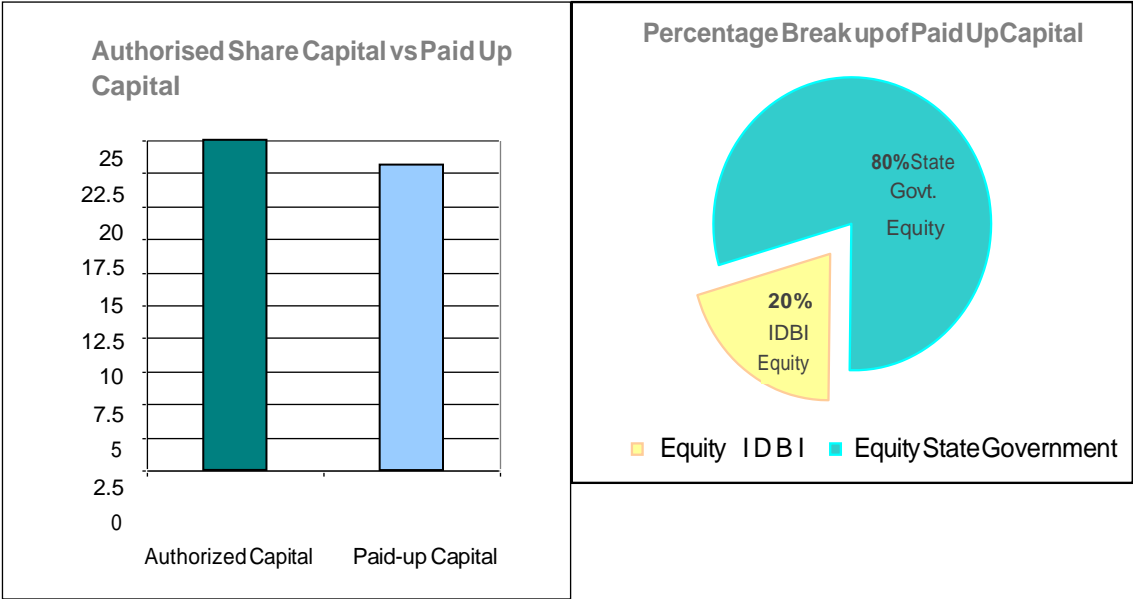
NIDC LTD
Administrative Report (1st April 2024 – 31st March 2025)

This Report is published in accordance with the information available from the Corporation’s database & administration.
Throughout this report, the terms “NIDC,” “Corporation,” “we,” and “our” refer to Nagaland Industrial Development Corporation Limited.

Background & Ownership of the Corporation

The Corporation is a Government of Nagaland undertaking, incorporated under the Companies Act, 1956 on March 26, 1970 with the objective to Promote, Develop, Establish and Assist industries in the State.

With an Authorized Capital of Rs.25 Crore, the Paid-up Capital as on 28th Feb 2022 stands at Rs. 23.20 Crore of which equity of Rs. 4.73 Crore and Rs. 18.46 Crore are subscribed by the IDBI and the State Government respectively.



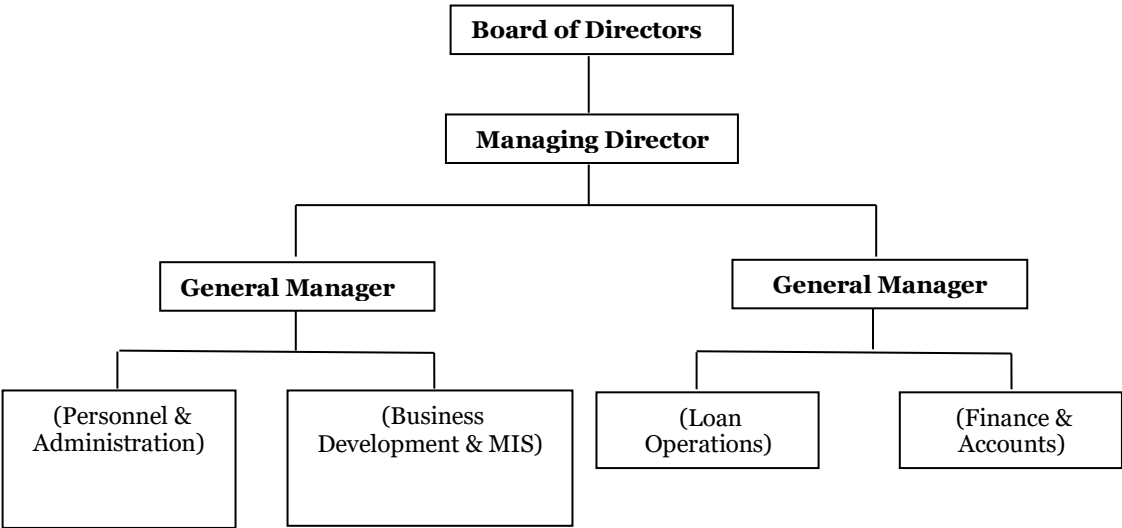
Management structure of the corporation

The Management of the Corporation is vested with a Board of Directors and the Managing Director is the Chief Executive Officer.

Recognizing the importance of skill up-gradation and the indispensability of information technology, the Corporation has placed Human Resource Development (HRD) and Digitization high on its agenda.

Almost all areas of the Corporation’s activities have been digitized and are in operation. Officers and staff are being deputed to undertake relevant training programs on regular intervals.

ORGANISATIONAL STRUCTURE OF NIDC LTD



Total Staff Strength of NIDC as on 31st March, 2025.

Sl.no	Category	Regular	On Deputation	In Deputation	Adhoc	Total
1.	Officer	20	Nil	Nil	Nil	20
2.	Staff (Gr-III)	36	-	-		36
3.	Staff (Gr-IV)	18	-	-		18
4.	Contingency (fixed)		-	-		
	Total	74	-	-		74

Activities of the Corporation

With the objective to promote, develop, establish & assist industries in the state, NIDC has played a significant role in taking up several major projects to contribute to the industrial development of the state. The contribution's made comply with the infrastructural & employment generation needs of the state and have been demonstrated as follows:

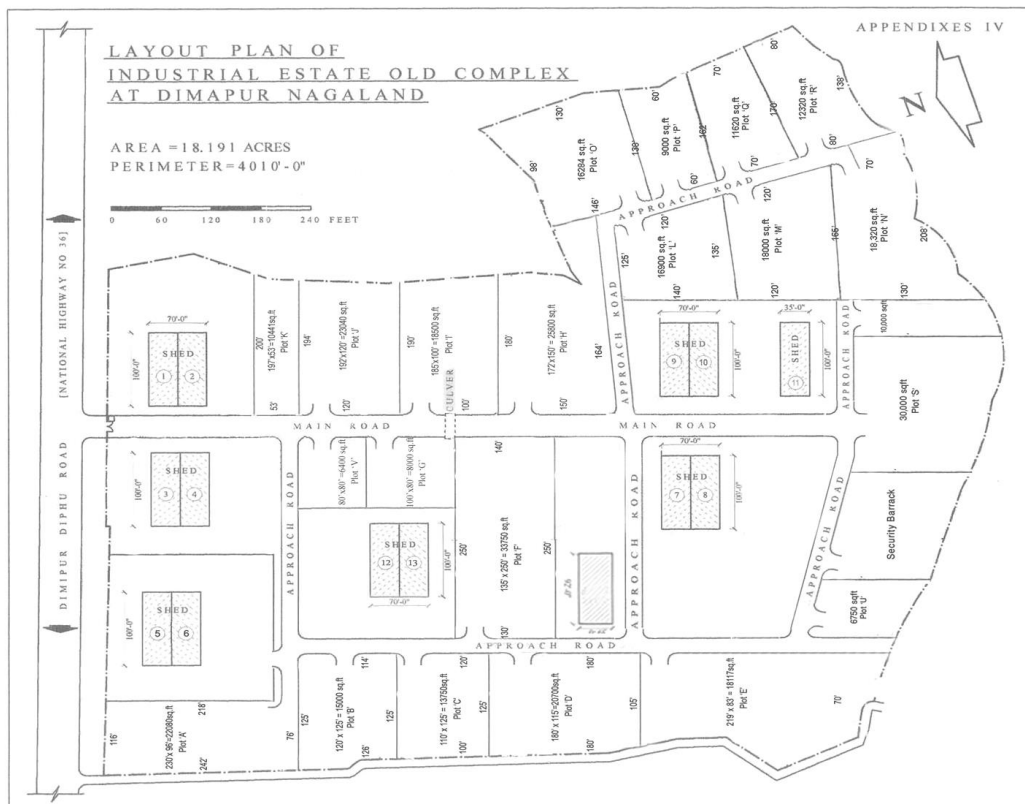
1. Industrial Estates

NIDC manages and maintains two Industrial Estates at Dimapur, which were taken over from the State Government in 1976. The Industrial Estates covering a total area of 40 acres has 25 ready built Standard Factory Sheds, which are rented out to industrial units at concessional rates.

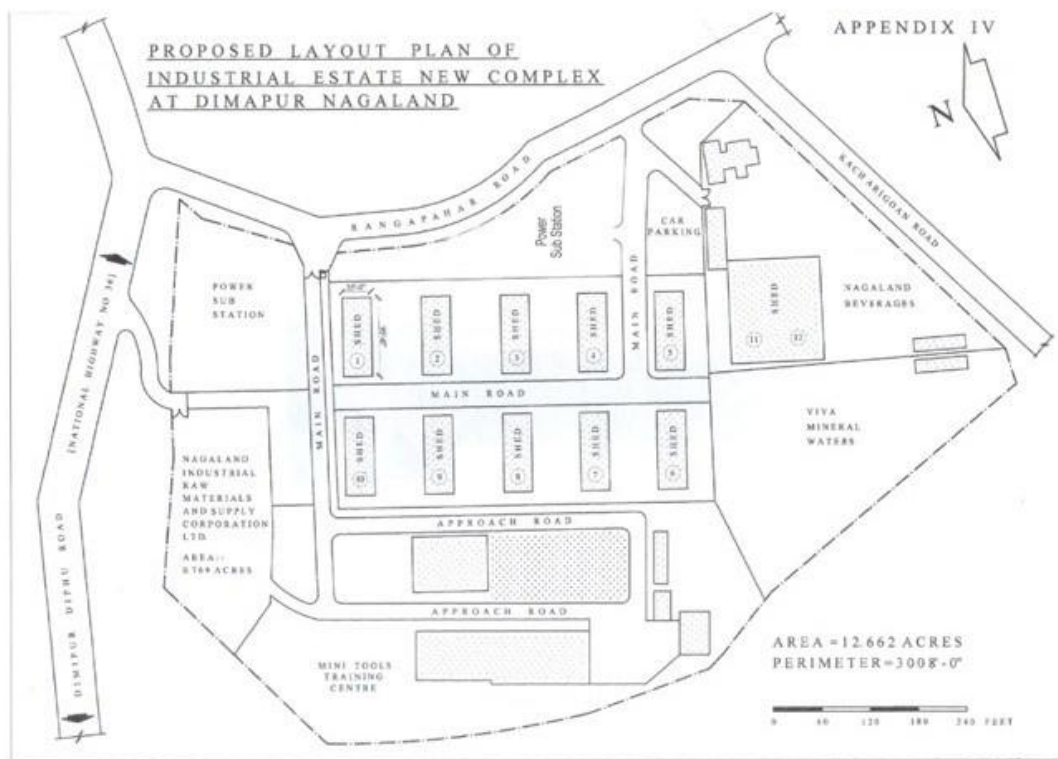


Detailed Information of Industrial Estates under NIDC

Sl. No	Name of Industrial Estate	Location	Area (In Acres)	No. of Sheds	No. of Open Space	Distance from nearest important location (In Kms)			Sector
						National Highway	Railway Station	Airport	
1	2	3	4	5	6	7	8	9	10
1	Old Industrial Estate	Industrial Estate Colony, Dimapur	18	13	16	(NH-29) 0	Dimapur 4	Dimapur 12	Multi Product
2	New Industrial Estate	Industrial Estate Colony, Dimapur	12	12	3	(NH-29) 0	Dimapur 4	Dimapur 12	Multi Product



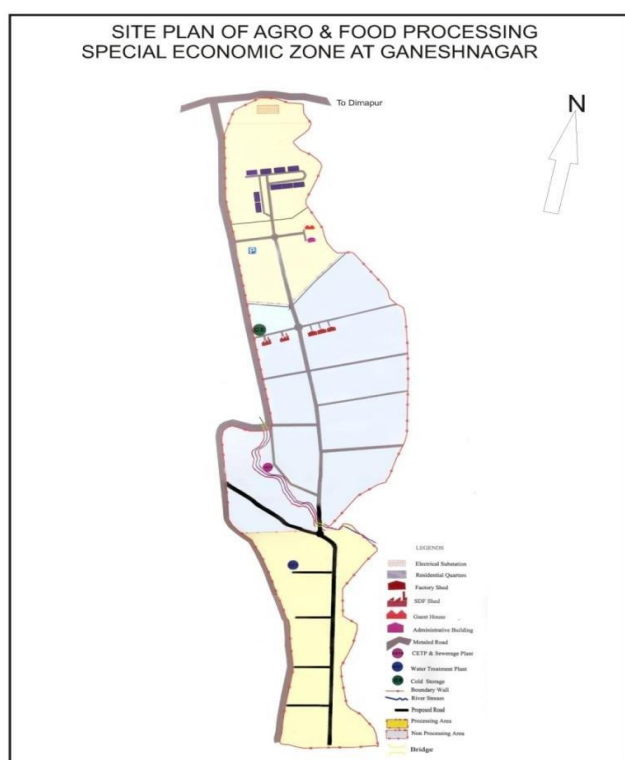
MAP of Industrial Estate Old Complex



2. Special Economic Zone (AFSEZ) at Ganeshnagar

The Government of India (GOI) has taken several initiatives aimed at developing Special Economic Zones in the country in order to promote exports and develop regional infrastructure. In reference to the same, Nagaland Industrial Development Corporation Limited (NIDC) identified Dimapur as the location for the Special Economic Zone and a SEZ was created with the approval from the Ministry of Commerce vide No. F.1/149x2007-SEZ dated July 9, 2009; the Project was planned across an area of 125 acres. The SEZ aims to offer a perfect blend of industrial, business and social infrastructure in the midst of lush and green eco-friendly environment incorporating the latest state of the art green technologies.

Additionally, with the intention of widening the scope of accommodating entrepreneurs from various industries, the Special Economic Zone (SEZ) has been deemed multi sector.



3. IIDC Kiruphema, Kohima District

NIDC was the implementation agency for setting up the Integrated Infrastructure Development Centers (IIDCs) at Kiruphema, Kohima District which was approved by the Central Government with the works been executed by the Engineering Wing of the Directorate of Industries & Commerce, Kohima. The IIDC consist of common facility centres along with developed plots. The project is still with the Directorate of Industries & Commerce Department, Kohima.

4. Refinance Schemes

Starting with a Hire Purchase Scheme in 1976-77, NIDC started employment generation assistance under the refinance schemes of the following Government organizations:

- Industrial Development Bank of India (IDBI) since 1978.
- National Scheduled Castes & Scheduled Tribes Finance & Development Corporation (NSTFDC) since 1992-93.
- National Minorities Development & Finance Corporation (NMDFC) in 1997- 98.
- National Safai Karamcharis Finance & Development Corporation (NSKFDC) schemes from 2015-16.

NIDC began channeling funds of the National Scheduled Castes and Scheduled Tribes Finance Development Corporation (NSFDC) from 1992-93 and the National Minorities Development and Finance Corporation (NMDFC) since 1997-98. Further, the Corporation started implementing NSKFDC schemes in the State from 2015-16.

It is an acknowledged fact that NIDC, through its thrust in the transport sector, has created a genre of private transport operators and today there are private taxis and buses servicing every remote part of the State thereby alleviating the transport and communication bottlenecks, a crucial infrastructure for development.

Under various schemes, assistance amounting to over 16141.3 Lakhs has been disbursed to 8691 entrepreneurs and the generation of employment, both direct as well as indirect, is estimated at 19719.

The bulk of the flow of assistance was directed towards the Tiny and Small Scale Sectors including Small Road Transport Operators (SRTO).

Performance review of refinance schemes for the Year 2024-2025

Borrowings during the period, 1st April 2024 – 31th March 2025

Particulars	Amount (In Lakhs)
NMDFC	0
NSTFDC	0
NSKFDC	0
Total Borrowings	0

State Government Guarantee as on 31st Dec 2024

Particulars	Amount (In Lakhs)
NMDFC	43.00
NSTFDC	25.00
NSKFDC	5.00
Total	73.00

The management has, in the recent years, strengthened its recovery and follow-up departments to assess the position and performance of units assisted more efficiently. Thereof, the corporation has seen a marginal increase in the rate of loan recovery performance. However, there are still obstacles in reaching the targets set. Reasons owing to willful defaulters, prevailing social and political situations, lack of adequate and timely access to working capital and similar constraints. These factors do not only affect the corporation but also the entrepreneurs who are forced to shut down or operate below capacity and unable to service the loans.

Nevertheless, efforts have been put in to regularly improve the working capacity of its recovery departments by implementing various technological solutions to assist the overall recovery performance. It may also be mentioned that the corporation is taking legal action for recovery of dues from defaulters which has produced a positive response from the defaulters. It is thus, expected that in the years to come the rate of performance in loan recovery activities will improve.

5. Residential Complex

The Residential Complex was constructed during the year 1984-85. The Residential Complex has one MIG block building consisting of 6 nos. flats, Two LIG block building consisting of 16 nos. flats and one EWS block building consisting of 10 nos. of flat. During the year 2000 additional building were constructed where one LIG block building consisting of 4 nos. of flats. Thus, all together there are 36 nos. of various types of residential flats.

NEW INITIATIVES

NIDC manages two Industrial Estates in Dimapur with a total area measuring 30 acres with ready built Standard factory sheds and plots which are being allotted and leased out to entrepreneurs at subsidized rates. The revenue earnings from these leased units have also increased over the past year with revision in rental rates with almost 100% occupancy rate.

Additionally NIDC also manages a Multi sectors SEZ in Ganeshnagar that offers a perfect blend of industrial, business and social infrastructure such as:

- Housing blocks
- Developed plots
- Standard Design Factories
- Industrial Sheds
- 10MW Electrical Sub station
- 2,00,000 litres WTP

There have been ongoing processes for potential Export Oriented Units (EOU) in the year 2024-25 to be set up at the Multi Sector SEZ which are still ongoing.

NIDC also owns and manages a residential complex at Supermarket area, Dimapur which provides low cost residential accommodation facilities for lower income sections of the society, consisting of 36 residential flats categorized into Middle Income Group (MIG), Lower Income Group (LIG) and Economically Weak Section (EWS) flats.

Besides exploring various avenues for business expansion, NIDC has been made the State Implementing Agency for the following schemes under different Central Ministries of GoI. Projects being implemented in the year 2024-25 are as follows:

- 1) Establishment of the **New Industrial Estate** at Tuli, Mokokchung (MSE CDP Scheme, Under Ministry of MSME)



- 2) **The Common Facility Centre (CFC) for Wooden Furniture Cluster, Toluvi, Dimapur District, Nagaland.** (MSE CDP Scheme, Under Ministry of MSME)



CFC Wooden Furniture Cluster, Toluvi - Site Visit

- 3) **The Common Facility Centre (CFC) for Food Processing Cluster, Yaongyimsen, Mokokchung District, Nagaland.** (MSE CDP Scheme, Under Ministry of MSME)



CFC Food Processing Cluster, Yaongyimsen - Site Visit

- 4) **The Common Facility Centre (CFC) for Honey, Spices & Food Processing Cluster, Longkhim & Chare, Tuensang Dist (MSE CDP Scheme, Under Ministry of MSME)**
- 5) **The Common Facility Centre (CFC) for Food Processing Cluster, Pughoboto, Zunheboto Distt. (MSE CDP Scheme, Under Ministry of MSME)**
- 6) **The Common Facility Centre (CFC) for Animal Feed Cluster, Mongsenyimti, Mkg Dist. (MSE CDP Scheme, Under Ministry of MSME)**
- 7) **Raising & Accelerating MSME Performance (RAMP) Scheme under the Ministry of MSME, GoI.**



RAMP Inaugural Programme
(27th Aug 2024)



Technology Clinic



Capacity Building Training Programme at IIT Guwahati (Under RAMP Scheme)

8) Community Trade Link Centre (CTLC), NEC, Jalukie, Peren Distt.



Other Notable activities under taken by the Corporation are as follows

-Seminar given by the Corporation's Officer at NTTC on "Entrepreneurship Development Program" EDP held on 30th October 2024

-Held the 1st **North East Tech Summit** sponsored by Software Technology Parks of India (STPI) on 9th December 2024 at Jotsoma



North East Tech Summit

The year 2024-2025 was a transformational phase for NIDC, with substantial industrial and financial growth. Moving forward, the corporation remains committed to its vision of making Nagaland an industrially self-sustaining state.

CONCLUSION

NIDC as a developmental agency has to depend on external funding for all its activities. The spread available from its term lending activities and other income generation like rent, commissions, etc., are only sufficient to meet administrative overheads. NIDC as a State Government undertaking is thus dependent on the State Government and other All India Financial institutions for funding its proposed programs.

While the overall economic changes in the country has attributed to the changed perceptions with regard to developmental funding, organizations like NIDC operating in economically underdeveloped states like Nagaland does suffer serious setbacks in its operations specially in the absence of fall - back supports.

However, NIDC has in the recent years been working on its new business ventures in tandem with the changing economic scenario for creating and infusing economic growth in the State. It may be stated that, NIDC as a developmental agency of the State Industries & Commerce department requires the support of the State Government by way of Equity Contributions, Grant for developmental activities, etc., for supporting and implementing new project ventures as well as for executing policies & programs of the Government in the industrial development of the State. This would further enable NIDC Ltd to establish itself as a catalyst for economic growth and development of the State.

